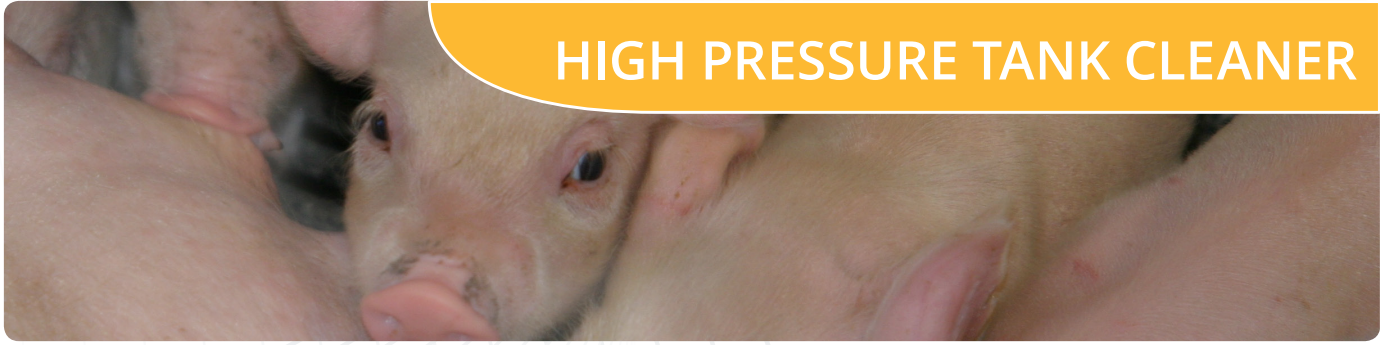




HIGH PRESSURE TANK CLEANER



SKIOLD MAKES THE DIFFERENCE!

High pressure tank cleaner:

This tank cleaner must be driven by a high pressure pump via standard connection and high pressure valve. It can either be connected to an existing high pressure system or connected to a separate high pressure system installed for this specific purpose. Whether existing or a new system, it must be a pressure controlled system. The high pressure tank cleaner is supplied with a number of nozzles with different sizes in order to obtain the flow and pressure to suit the high pressure system. It is recommended to execute cleaning at least once daily, this can be done automatically via the DM6000 feed computer.

The equipment may not be installed or used before all safety precautions on mixing tank and electrical panels (Standard of SKIOLD) is installed and enabled. High pressure hose and couplings are NOT in the packages.

Item No.	
331 000 300	High pressure cleaner for tank, complete
331 000 305	High pressure valve for high pressure cleaner

Technical information	
High pressure inlet	AR1 A M22
Electric connection	220 Vac for cleaner and valve
Rated pressure	220 bar - 22 MPa
Permissible pressure	250 bar - 25 MPa
Tated flow rate	21 L/min.
Rated temperature	90° C
Eletric motor	12 V DC - 12W (converter for 220 Vac)
Cable length	10 m
Min. overall ø	40 mm
Nozzle type	2 x M4

