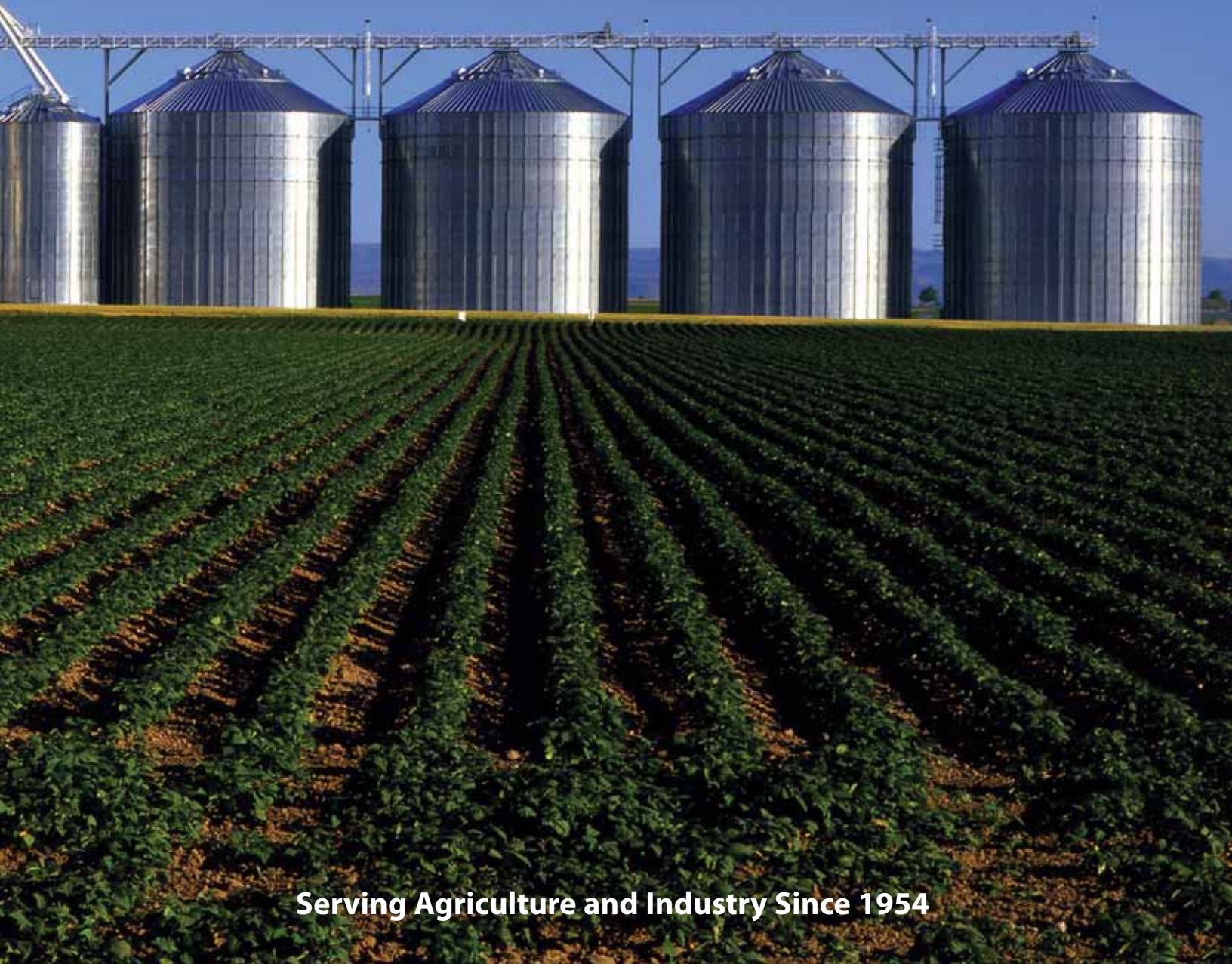




**The Leader in High Technology
Grain Storage Solutions**



Serving Agriculture and Industry Since 1954

GLOBAL STORAGE SOLUTIONS



SCAFCO Grain Systems is a market leader in the design and manufacturing of grain storage and handling systems. We have earned a worldwide reputation for superior system design capabilities, engineering, high-quality materials, and craftsmanship.

SCAFCO customers look to us to solve their storage, aeration, conveying, cleaning, and drying needs for grain and other flowable bulk commodities. Clients in over seventy countries rely on SCAFCO for our full line of farm and commercial silos/bins, hopper bottom silos/bins, and a complete line of accessories.

Contact SCAFCO about your handling and storage needs for commodities such as wheat, corn, soybeans, barley, pulses, rice, sun-flowers, palm kernels, and other free flowing products like polyethylene resin beads, wood pellets, animal feed and some minerals. Whether your storage requirement is large or small, SCAFCO will provide the design and manufacturing support services you need.



CONTENTS

Farm Bins/Silos	3
Commercial Bins/Silos	5
Catwalks, Towers & Stairways	6
Hopper Bottom Bins/Silos & Specifications	7
Aeration & Drying Systems	9

INSTALLED IN OVER 70 COUNTRIES AROUND THE WORLD



CONTENTS

Corrugated Roof Systems	10
Product Engineering	11
Additional Quality Products	12
Bin/Silo Specifications	13
Supreme™ Bins/Silos	17

SCAFCO FARM BINS/SILOS

SCAFCO's farm bins/silos are perfect for on-farm applications and small bins/silos, ranging from 12' to 48' in diameter (3.66 m to 14.63 m) with capacities up to 64,906 ft³ (1,837.9 m³).

SCAFCO's farm bins/silos provide an exceptionally strong storage solution by using high-quality galvanized steel wall sheets and roof panels. Our farm bins/silos are equipped with walk-in doors and can be supplied with all the handling equipment and accessories to meet your needs.



WALK-IN DOORS

Available on all farm bins/silos through 48' (14.63 m) in diameter and 32' (9.76 m) eave height, SCAFCO's walk-in door opens to 28" x 60" (711 mm x 1524 mm). The design includes a welded frame, reinforced outer door panel, and three hinged inner flaps with positive locking bars. Doors bolt into place easily with corrugated welded door jambs. A heavy-duty version is available for all stiffened bins/silos.



COMPLETE LADDER SYSTEM

SCAFCO provides a complete ladder system inside and outside the bin/silo. Safety cages and rest platforms are also available.



INSPECTION HATCH

All bins/silos (12' [3.66 m] & larger) are equipped with a man-size inspection hatch at the eave. The hatch is weather-tight and factory installed with a lockable latch.



CAP & RIB ROOF PANELS

SCAFCO's one piece deep-rib corrugated roof panels offer outstanding load-carrying capabilities, providing durability under heavy snow and ice loads and other extreme weather conditions. Our design enables roofs to bolt together rapidly in the field with each roof panel securely fastened to wall panels with steel clips. Heavy-duty 3 1/4" (82 mm) high box-ribs provide strength and rigidity for each roof panel. Roofs have either 24 or 36 corrugated roof panels (depending upon bin/silo diameter) and a weather-tight closure.



HIGH STRENGTH BOLTS

All SCAFCO grain bins/silos are furnished with heat-treated SAE grade 8.2 (equivalent to DIN 10.9) bolts and JS1000 corrosion resistant coating over zinc. Our high strength bolts will meet and exceed 1000 hours to red rust in Salt Spray Testing, compared to other silo manufacturers who use zinc dichromate coated bolts that can only withstand a minimum of 108 hours to red rust.





ROOF LADDER CLEATS

SCAFCO roof ladder cleats are galvanized angles bolted to roof panels, allowing easy access to the inspection hatch and peak cap. SCAFCO's roof cleats are standard for grain bins/silos ranging from 12' to 42' in diameter (3.66 m to 12.80 m).

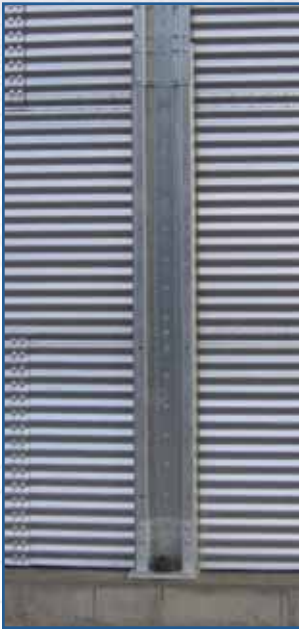


FARM WALL SHEETS

SCAFCO's unique 42 2/3" (1.08 m) galvanized steel sheets have a 2 2/3" pitch and 1/2" (67.7 mm x 12.7 mm) deep corrugation that is substantially stronger than the competitors' standard 4" (102 mm) pitch corrugation. Sheets are pre-punched in a single stroke operation, guaranteeing accurate hole alignment and uniform fit and are precision roll-formed from high yield steel.

SCAFCO COMMERCIAL BINS/SILOS

SCAFCO commercial grain bins/silos offer outstanding strength and durability. SCAFCO 42 2/3" (1.08 m) wide corrugated sheets are manufactured from high strength steel, with galvanized steel stiffeners and strong box-rib roofs. Diameters range from 15' (4.57 m) to 138' (42.06 m), with extra-tall sizes available. SCAFCO also carries a full range of accessories to complete your storage installation.



SUPER STIFFENERS

SCAFCO super stiffeners use 57-ksi yield strength (393 MPa) [65 ksi minimum tensile strength (448 MPa)], hot-dipped galvanized steel. The shape of the super stiffeners surpasses the compressive strengths of past open-faced models. The profile can handle the drawdown of very tall bins/silos and severe seismic loads. Each bin/silo utilizes several stiffener gauges for the most efficient column design.

Heavy-duty stiffeners transfer draw down loads from the sidewalls to the foundation. Stiffener base plate is factory welded to bottom stiffener providing durable bin/silo anchorage in order to resist lateral and uplift loads.



ACCESS DOORS

Stiffened bins/silos feature a heavy-duty 23 1/2" x 26" (597 mm x 660 mm) access door. Access doors are factory-welded into the bin/silo's wall sheets.

Customers may also select from these stiffened bin/silo door options:
Heavy-duty 28" x 36" (711 mm x 914 mm) utility door.
Heavy-duty Walk-in door for easy access. 28" x 60" (711 mm x 1524 mm).



GIANT DOORS

SCAFCO Giant doors are designed for drive-in access for small front-end loaders or other equipment. Two sizes are available: 6' 3 1/2" high x 5' 7 1/2" wide or 8'0" high x 6'0" wide (1.92 m x 1.72 m or 2.44 m x 1.83 m).



COMPLETE LADDER SYSTEMS

Complete interior & exterior ladder systems are available including safety cage and rest platforms for sidewall heights above 32' (9.76 m).



SIDE DISCHARGE SYSTEM

SCAFCO side discharge system allows gravity loadout to trucks or rail cars. Interior flumes channel grain from the top storage level to the discharge chute. Available with 12" (300 mm) square discharge outlet and rack and pinion gate.



GALVANIZED STEEL WALL SHEETS

SCAFCO unique 42 2/3" (1.08 m) galvanized steel wall sheets have a 2 2/3" pitch and 1/2" (67.7 mm x 12.7 mm) deep corrugation. Wall sheets are pre-punched in a single stroke operation, assuring accurate hole alignment and uniform fit. Sheets are precision roll-formed using galvanized steel with a minimum of 57 ksi (393 MPa) yield strength.

Bolt-together all-galvanized steel catwalks are available in standard widths of 48", 58" and 68" (1220 mm, 1473 mm, and 1727 mm) with clear spans up to 50' (15.25 m). Each catwalk includes a 24" (610 mm) wide non-skid walkway.

Full-width catwalk versions are available for personnel movement. All catwalks are manufactured from high-strength galvanized steel with G115 coating (minimum 350 grams/m² zinc) and are available in increments of 4'0" (1.22 m) in lengths starting at 12'0" (3.66 m).

SCAFCO structural steel catwalks and towers are custom designed to meet project requirements. All custom SCAFCO structures bolt together on site and can be designed to meet varying live, wind and seismic requirements. Structures allow the flexibility to add platforms and walk-around access where necessary. All structural catwalks and towers are fabricated by certified welders and are hot-dip galvanized to ensure many years of maintenance free reliability.



SPIRAL STAIRS

SCAFCO spiral stairs include galvanized stair beams and brackets, non-skid stair treads, and handrails. Posts are provided from the eave to the center fill cap as well as surrounding the inspection hatch at the eave for safe access to these areas.

The railings provide a 28" (711 mm) clear width walkway with handrail 32" (810 mm) above treads.



SUPPORT STRUCTURES

SCAFCO designs and manufactures custom support structures to meet project site requirements.

Our elevators support towers are designed with integral spiral stairways and platforms and are constructed with structural steel columns, beams and braces.



ROOF STAIRWAYS

SCAFCO roof stairways include galvanized stair beams and brackets, nonskid stair treads, hand rails and posts from eave to center fill cap and surrounding the inspection hatch at the eave to provide safe access to these areas.

The railings provide a 24" (610 mm) clear width walkway with handrail 32" (810 mm) above treads.



GALVANIZED CATWALKS

SCAFCO can design catwalks and equipment to connect at any angle and incline required by the project site.

Catwalks may be designed to support conveyors of any width. Walkways may be supplied with structural bar grating or cold formed slip resistant decking.

SCAFCO HOPPER BOTTOM BINS/SILOS

If your application requires a complete bin/silo cleanout or you need lower material handling costs, a SCAFCO Hopper Bottom Bin/Silo is your solution.

With 2 2/3" (67 mm) pitch corrugated steel wall sheets, a sturdy design, and high quality materials our bins/silos are stronger and more durable than the competition.

SCAFCO offers a wide range of features to provide you with many options for a custom made bin/silo. Hopper bottom bins/silos are available in capacities from 3 tons to over 1,500 tons and can store any flowable commodity such as grain, feed, plastic pellets, certain mineral supplements, and seed. Structural platforms are available through SCAFCO to elevate bins/silos above rail sidings or truck driveways for fast loading of railcars or trucks.



SPECIFICATIONS

Silo Model Number	Diameter		Overall Height		Volume Capacity		Bushels +5% Compaction	@ 770 KG/M ³ Metric Tons
	Feet	Meters	Feet	Meters	Cu. Feet	Cu. Meters		
60° HOPPER BOTTOM BINS/SILOS - CENTER DISCHARGE								
6601HBT	6'	1.83	12' 1"	3.68	164	4.6	132	3.6
6602HBT	6'	1.83	15' 7"	4.76	263	7.5	212	5.7
6603HBT	6'	1.83	19' 2"	5.84	363	10.3	291	7.9
6604HBT	6'	1.83	22' 9"	6.93	462	13.1	371	10.1
9601HBT	9'	2.74	15' 7"	4.74	439	12.4	353	9.6
9602HBT	9'	2.74	19' 1"	5.82	663	18.8	533	14.4
9603HBT	9'	2.74	22' 8"	6.91	887	25.1	713	19.3
9604HBT	9'	2.74	26' 3"	7.99	1,111	31.5	893	24.2
9605HBT	9'	2.74	29' 9"	9.07	1,335	37.8	1,072	29.1
9606HBT	9'	2.74	33' 4"	10.16	1,558	44.1	1,252	33.9
1201HBT-60	12'	3.66	19' 1"	5.82	907	25.7	729	19.8
1202HBT-60	12'	3.66	22' 8"	6.90	1,305	37.0	1,049	28.4
1203HBT-60	12'	3.66	26' 2"	7.99	1,703	48.2	1,368	37.1
1204HBT-60	12'	3.66	29' 9"	9.07	2,101	59.5	1,688	45.7
1205HBT-60	12'	3.66	33' 4"	10.15	2,499	70.8	2,008	54.4
1501HBT-60	15'	4.57	22' 7"	6.89	1,612	45.7	1,296	35.1
1502HBT-60	15'	4.57	26' 2"	7.97	2,234	63.3	1,795	48.6
1503HBT-60	15'	4.57	29' 9"	9.06	2,856	80.9	2,295	62.2
1504HBT-60	15'	4.57	33' 3"	10.14	3,478	98.5	2,794	75.7
1505HBT-60	15'	4.57	36' 10"	11.23	4,099	116.1	3,294	89.3
1506HBT-60	15'	4.57	40' 5"	12.31	4,721	133.7	3,794	102.8
1507SHBT-60	15'	4.57	44' 1"	13.44	5,343	151.3	4,508	122.1
1508SHBT-60**	15'	4.57	47' 8"	14.53	5,964	168.9	5,032	136.4
1509SHBT-60**	15'	4.57	51' 3"	15.61	6,586	186.5	5,557	150.6
1510SHBT-60**	15'	4.57	54' 9"	16.70	7,208	204.1	6,081	164.8
1511SHBT-60**	15'	4.57	59' 3"	18.05	7,985	226.1	6,737	182.5
1512SHBT-60**	15'	4.57	61' 11"	18.86	8,451	239.3	7,131	193.2
1514SHBT-60**	15'	4.57	67' 0"	20.42	9,345	264.6	7,885	213.6
1804SHBT-60**	18'	5.49	36' 11"	11.24	5,291	149.8	4,464	121.0
1805SHBT-60**	18'	5.49	40' 5"	12.33	6,186	175.2	5,220	141.4
1806SHBT-60**	18'	5.49	44' 0"	13.41	7,082	200.5	5,975	161.9
1807SHBT-60**	18'	5.49	47' 7"	14.50	7,977	225.9	6,730	182.4

SPECIFICATIONS

Silo Model Number	Diameter		Overall Height		Volume Capacity		Bushels +5% Compaction	@770 KG/M ³ Metric Tons
	Feet	Meters	Feet	Meters	Cu. Feet	Cu. Meters		
60° HOPPER BOTTOM BINS/SILOS - CENTER DISCHARGE								
1808SHBT**	18'	5.49	51' 7"	15.72	8,990	254.6	7,586	205.5
1809SHBT**	18'	5.49	55' 2"	16.81	9,886	279.9	8,341	226.0
1810SHBT**	18'	5.49	58' 8"	17.89	10,781	305.3	9,096	246.5
1811SHBT**	18'	5.49	63' 2"	19.25	11,900	337.0	10,041	272.0
1812SHBT**	18'	5.49	65' 10"	20.06	12,571	356.0	10,607	287.4
1814SHBT**	18'	5.49	70' 11"	21.62	13,858	392.4	11,693	316.8
2104SHBT**	21'	6.40	40' 4"	12.29	7,588	214.9	6,402	173.5
2105SHBT**	21'	6.40	43' 11"	13.38	8,806	249.4	7,430	201.3
2106SHBT**	21'	6.40	47' 5"	14.46	10,025	283.9	8,458	229.2
2107SHBT**	21'	6.40	51' 0"	15.55	11,243	318.4	9,486	257.0
2108SHBT**	21'	6.40	55' 0"	16.77	12,623	357.5	10,651	288.6
2109SHBT**	21'	6.40	58' 7"	17.86	13,842	392.0	11,679	316.4
2110SHBT**	21'	6.40	62' 2"	18.94	15,060	426.5	12,707	344.3
2111SHBT**	21'	6.40	66' 7"	20.30	16,583	469.6	13,992	379.1
2112SHBT**	21'	6.40	69' 3"	21.11	17,497	495.5	14,763	400.0
2114SHBT**	21'	6.40	74' 4"	22.67	19,249	545.1	16,241	440.1
45° HOPPER BOTTOM BINS/SILOS - CENTER DISCHARGE								
1201HBT	12'	3.66	15' 10"	4.82	744	21.1	598	16.2
1202HBT	12'	3.66	19' 4"	5.90	1,142	32.3	918	24.9
1203HBT	12'	3.66	22' 11"	6.99	1,540	43.6	1,237	33.5
1204HBT	12'	3.66	26' 6"	8.07	1,938	54.9	1,557	42.2
1205HBT	12'	3.66	30' 0"	9.15	2,336	66.1	1,877	50.9
1501HBT	15'	4.57	18' 3"	5.56	1,294	36.6	1,040	28.2
1502HBT	15'	4.57	21' 10"	6.64	1,916	54.3	1,539	41.7
1503HBT	15'	4.57	25' 4"	7.73	2,537	71.9	2,039	55.2
1504HBT	15'	4.57	28' 11"	8.81	3,159	89.5	2,539	68.8
1505HBT	15'	4.57	32' 6"	9.89	3,781	107.1	3,038	82.3
1506HBT	15'	4.57	36' 0"	10.98	4,403	124.7	3,538	95.9
1507SHBT**	15'	4.57	39' 9"	12.11	5,024	142.3	4,239	114.9
1508SHBT**	15'	4.57	43' 4"	13.19	5,646	159.9	4,764	129.1
1509SHBT**	15'	4.57	46' 10"	14.28	6,268	177.5	5,288	143.3
1510SHBT**	15'	4.57	50' 5"	15.36	6,889	195.1	5,813	157.5
1511SHBT**	15'	4.57	54' 10"	16.72	7,667	217.1	6,469	175.3
1804HBT	18'	5.49	31' 5"	9.58	4,741	134.3	4,000	108.4
1805HBT	18'	5.49	35' 0"	10.66	5,636	159.6	4,756	128.9
1806SHBT	18'	5.49	38' 6"	11.75	6,532	185.0	5,511	149.3
1807SHBT**	18'	5.49	42' 1"	12.83	7,427	210.3	6,266	169.8
1808SHBT**	18'	5.49	46' 2"	14.06	8,446	239.2	7,127	193.1
1809SHBT**	18'	5.49	49' 8"	15.15	9,342	264.5	7,882	213.6
1810SHBT**	18'	5.49	53' 3"	16.23	10,237	289.9	8,637	234.0
1811SHBT**	18'	5.49	57' 8"	17.59	11,356	321.6	9,581	259.6
1812SHBT**	18'	5.49	60' 4"	18.40	12,027	340.6	10,148	275.0
1814SHBT**	18'	5.49	65' 6"	19.96	13,314	377.0	11,234	304.4
2104HBT	21'	6.40	33' 9"	10.29	6,714	190.1	5,665	153.5
2105HBT	21'	6.40	37' 4"	11.38	7,933	224.6	6,693	181.4
2106SHBT**	21'	6.40	40' 11"	12.46	9,151	259.1	7,721	209.2
2107SHBT**	21'	6.40	44' 5"	13.55	10,370	293.6	8,749	237.1
2108SHBT**	21'	6.40	48' 6"	14.78	11,758	332.9	9,920	268.8
2109SHBT**	21'	6.40	52' 1"	15.87	12,976	367.5	10,949	296.7
2110SHBT**	21'	6.40	55' 7"	16.95	14,195	402.0	11,977	324.5
2111SHBT**	21'	6.40	60' 1"	18.30	15,718	445.1	13,262	359.3
2112SHBT**	21'	6.40	62' 9"	19.12	16,632	471.0	14,033	380.2
2114SHBT**	21'	6.40	67' 10"	20.67	18,383	520.6	15,511	420.3
2407SHBT**	24'	7.32	47' 5"	14.44	14,144	400.5	11,934	323.3
2408SHBT**	24'	7.32	50' 11"	15.52	15,735	445.6	13,276	359.7

SPECIFICATIONS

Silo Model Number	Diameter		Overall Height		Volume Capacity		Bushels +5% Compaction	@770 KG/M ³ Metric Tons
	Feet	Meters	Feet	Meters	Cu. Feet	Cu. Meters		
40° STIFFENED HOPPER BOTTOM BINS/SILOS - CENTER DISCHARGE								
2409SHBT**	24'	7.32	54' 6"	16.61	17,327	490.7	14,619	396.1
2410SHBT**	24'	7.32	58' 1"	17.69	18,918	535.7	15,962	432.5
2411SHBT**	24'	7.32	62' 6"	19.05	20,908	592.1	17,641	478.0
2412SHBT**	24'	7.32	65' 2"	19.86	22,101	625.9	18,648	505.3
2414SHBT**	24'	7.32	70' 3"	21.42	24,389	690.6	20,578	557.6
2707SHBT**	27'	8.23	49' 0"	14.93	18,332	519.1	15,468	419.1
2708SHBT**	27'	8.23	52' 7"	16.02	20,347	576.2	17,167	465.1
2709SHBT**	27'	8.23	56' 1"	17.10	22,361	633.2	18,867	511.2
2710SHBT**	27'	8.23	59' 8"	18.18	24,375	690.3	20,566	557.2
2711SHBT**	27'	8.23	64' 1"	19.54	26,893	761.6	22,691	614.8
2712SHBT**	27'	8.23	66' 9"	20.35	28,404	804.3	23,966	649.3
2714SHBT**	27'	8.23	71' 11"	21.91	31,299	886.3	26,409	715.5
3007SHBT**	30'	9.14	49' 2"	14.99	22,696	642.7	19,150	518.9
3008SHBT**	30'	9.14	52' 9"	16.07	25,183	713.1	21,248	575.7
3009SHBT**	30'	9.14	56' 4"	17.16	27,670	783.6	23,346	632.6
3010SHBT**	30'	9.14	59' 10"	18.24	30,157	854.0	25,445	689.4
3011SHBT**	30'	9.14	64' 4"	19.60	33,265	942.0	28,067	760.5
3012SHBT**	30'	9.14	67' 0"	20.41	35,130	994.8	29,641	803.1
3014SHBT**	30'	9.14	72' 1"	21.97	38,705	1,096.0	32,657	884.8
3307SHBT**	33'	10.06	51' 4"	15.63	28,040	794.0	23,658	641.0
3308SHBT**	33'	10.06	54' 10"	16.72	31,049	879.2	26,197	709.8
3309SHBT**	33'	10.06	58' 5"	17.80	34,058	964.4	28,736	778.6
3310SHBT**	33'	10.06	62' 0"	18.88	37,067	1,049.7	31,275	847.4
3311SHBT**	33'	10.06	66' 5"	20.24	40,828	1,156.2	34,449	933.4
3312SHBT**	33'	10.06	69' 1"	21.05	43,085	1,220.1	36,353	985.0
3314SHBT**	33'	10.06	74' 2"	22.61	47,410	1,342.6	40,002	1,083.9
3607SHBT**	36'	10.97	53' 5"	16.28	34,057	964.4	28,735	778.6
3608SHBT**	36'	10.97	57' 0"	17.36	37,638	1,065.8	31,757	860.4
3609SHBT**	36'	10.97	60' 6"	18.45	41,218	1,167.2	34,778	942.3
3610SHBT**	36'	10.97	64' 1"	19.53	44,799	1,268.6	37,799	1,024.2
3611SHBT**	36'	10.97	68' 6"	20.88	49,276	1,395.4	41,576	1,126.5
3612SHBT**	36'	10.97	71' 2"	21.70	51,961	1,471.4	43,842	1,187.9
3614SHBT**	36'	10.97	76' 4"	23.25	57,109	1,617.2	48,186	1,305.6
3615SHBT**	36'	10.97	81' 10"	24.95	62,704	1,775.7	52,907	1,433.5
3616SHBT**	36'	10.97	85' 5"	26.03	66,285	1,877.1	55,928	1,515.4

* 5% Compaction Applies Only to 1507 SHBT & Above

** One Access Door Provided in Bottom Ring



SCAFCO AERATION & DRYING SYSTEMS

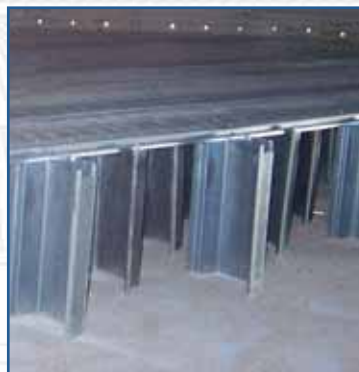
Aeration is an important aspect of every grain storage system. Properly operated aeration systems help control insect infestation and moisture migration, reducing grain spoilage.

SCAFCO aeration systems can be installed in new or existing storage facilities. SCAFCO uses rigid corrugated perforated aeration ducts made from heavy gauge galvanized steel and high efficiency aeration fans.



CENTRIFUGAL FANS

SCAFCO has 46 models of fans, offered in both 50 and 60 Hz, with low and high speed centrifugal and axial configurations. SCAFCO centrifugal fan housings are precision fabricated from heavy gauge galvanized steel which is rust resistant, provides an attractive finish and has a long life span. Fan housings are bolted together, using as few pieces as possible to increase the strength and reduce the number of seams that can cause air leakage or wear problems.



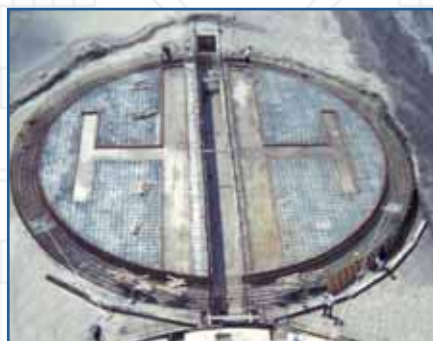
PERFORATED PLANK FLOOR FOR GRAIN DRYING, FAST ERECTION, & EASY CLEANING

SCAFCO perforated plank floors ensure fast assembly, uniform grain drying, and easy cleaning. Our interlocking planks are precision roll formed with 13% perforation and a slight crown for added strength and heavy duty legs. The Plank Floor design features a complete assembly kit for easy installation. Floors for small seeds are also available.



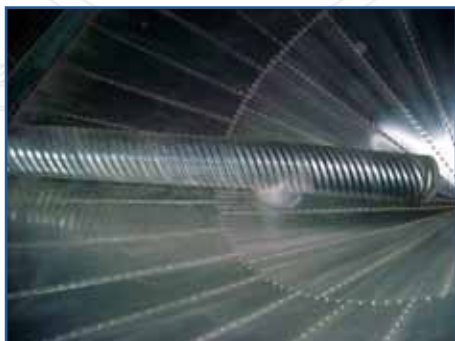
FLUSH FLOOR AERATION

SCAFCO Flush Floor systems provide easy installation with no pre-forming required. Floors can be poured directly into our steel concrete forms. Our system includes 14% open perforated planks with round perforation holes to minimize clogging.



DOUBLE H-PATTERN

All Double H-pattern Commercial flush floor aeration systems consist of plain and perforated corrugated galvanized decking, 4" (102 mm) wide hat-beams, 12" (300 mm) high support legs, ledger angles, perforated strips, corrugated filler strips, and fasteners.



HOPPER BOTTOM BIN/SILO AERATION

SCAFCO uses rigid perforated and corrugated galvanized steel pipe for aeration in hopper bottom bins/silos. Fans mount below the hopper, directing air into internal ducts and up through the grain mass.



AXIAL FANS

SCAFCO axial fans deliver high capacity airflow at maximum performance. Fans feature all galvanized steel bodies, heavy-duty cast aluminum blades and energy efficient electric motors. Axial fans are available in a variety of diameters and horsepower ratings.

CORRUGATED ROOF SYSTEMS

All bins/silos 12' (3.66 m) through 42' (12.80 m) in diameter are supplied with a single-stage self-supporting corrugated roofs. These corrugated roofs are designed for a peak equipment load of 2,000 pounds (907 kg) and 16 psf (78 kg/sq.m) live load.

Bins/silos 45' (13.72 m) and 48' (14.63 m) in diameter have single-stage corrugated roofs supported by "C" shaped, roll-formed galvanized rafters and purlins. Two-stage corrugate roofs for 48' (14.63 m) diameter bins/silos are also available. These corrugated roofs are rated for peak equipment loads of 10,000 pounds (4,536 kg) and 25 psf (122 kg/sq.m) live load. Single-stage self-supporting corrugated roofs, without rafters and purlins, are also available for 45' (13.72 m) and 48' (14.63 m) diameter bins/silos.

Corrugated roofs for 51' (15.54 m) diameter bins/silos and larger are supplied with "C" shaped, roll-formed galvanized rafters, purlins and two-stage roof panels. These corrugated roofs are

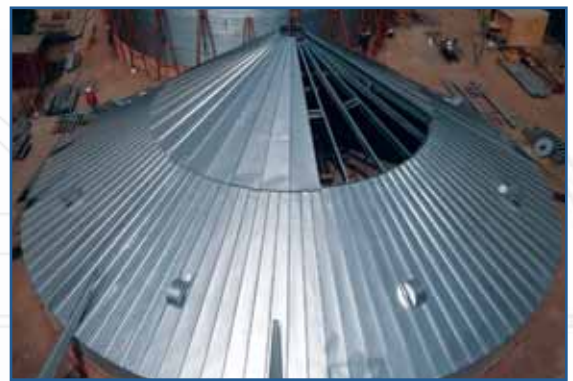


designed for 25 psf (122 kg/sq.m) live loads. The rated peak equipment load for 51' (15.54 m) through 87' (26.52 m) diameter roofs is 10,000 pounds (4,536 kg). Roofs for bins/silos 90' (27.43 m) through 117' (35.66 m) in diameter are rated for peak equipment loads of 20,000 pounds (9,072 kg). Bin/silo roofs for 120' (36.58 m) diameter and larger, are designed for 50,000-pound (22,680 kg) peak equipment loads.



Larger peak equipment loads are available upon request.

Roof panels are made of triangular sections of galvanized steel with brake-formed raised ribs along each side and 90° formed drip edge at the eave. The corrugated roof rib is a box-type rib with 3 1/4" (83 mm) rise. The corrugated roof panels are connected to the bin/silo eave with rib and center clips. Holes in the bin/silo roof and top ring wall sheets are factory-punched for clip installation.



Roofs of 39' (11.89 m) and 42' (12.80 m) diameter bins/silos have a tubular support ring with expandable connectors attached to the exterior of the roof midway between the eave and the segment ring.

The support ring provides added strength to the roof structure. Bin/silo roofs are also equipped with 36 roof rib supports.



Center fill opening is 22" (560 mm) diameter for bins/silos 12' (3.66 m) to 24' (7.30 m) diameter. Bins/silos 27' (8.23 m) through 105' (32.00 m) diameter have a 36" (90 mm) diameter fill opening. Optional 60" (1500 mm) opening is also available. Roof pitch for all bins/silos is 30°.

Each corrugated roof assembly 12' (3.66 m) diameter and larger has one panel equipped with factory-installed hinged inspection hatch and a lockable latch. Roof inspection hatch is located at the eave next to the roof ladder. The manhole is trapezoidal-shaped with dimensions 17" x 20" x 24" (430 mm x 508 mm x 610 mm).

Galvanized steel cleats are provided for bolting to the roof around the perimeter of the peak cap. Tubular rings are provided in lieu of cleats.

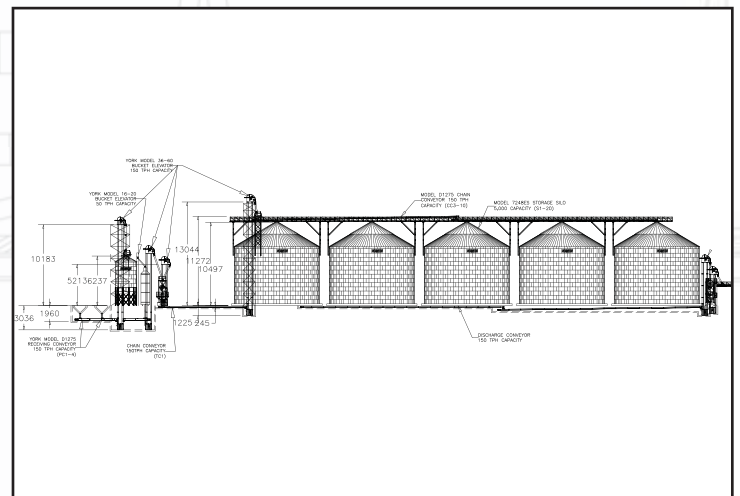
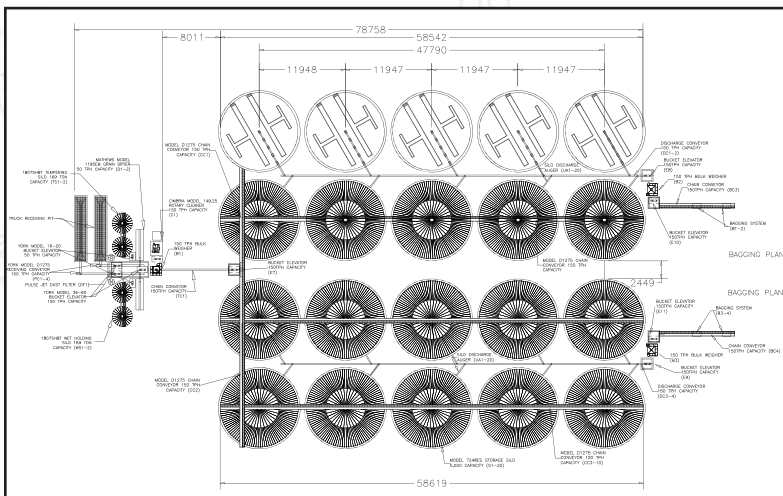
SCAFCO ENGINEERED WITH SUPERIOR QUALITY, DESIGN & SAFETY



SCAFCO produces a complete line of storage and handling systems for a variety of applications, ranging from small farms to large commercial installations. We offer a wide range of products for cleaning, drying, aeration, conveying and storage needs for grain and other free-flowing bulk commodities. SCAFCO farm and commercial bins/silos, hoppers, and accessories are used worldwide.

SCAFCO engineers use the latest computer drafting and analysis techniques to develop and produce project designs, layouts, shop drawings and manufacturing specifications. Our engineering staff has decades of combined experience in a wide variety of storage, handling, and processing applications. A modern computer aided design (CAD) system is used to assure timely, accurate, and efficient standard or customized system designs.

With SCAFCO, you can be assured that you will receive a superior quality product built to the highest design and safety standards. Whether you need a standard or customized solution, contact SCAFCO for engineering, design, and production assistance. We stand behind our product and are committed to bringing our customers a high quality product to guarantee your satisfaction.



ADDITIONAL QUALITY PRODUCTS...



WATER STORAGE TANKS

SCAFCO designs and manufactures water tank systems in 11 different diameters (6' - 36' [1.83 - 10.97 m]) and wall heights up to 14' (4.3 m), with capacities in excess of 100,000 gallons. Our high-quality galvanized steel tank exteriors have hot-dipped zinc coatings for dependable and lasting protection. SCAFCO water tanks have an internal flexible liner that creates a watertight membrane ensuring stored water never makes contact with the tank's steel surface. High-quality materials and excellent construction of SCAFCO water tanks minimize corrosion and maintenance.

SCAFCO water tanks encompass the same superior design features as our other fine storage products, including complete ladder systems, high-strength fasteners, heavy-duty anchor clips, galvanized steel sidewall staves, and more. All SCAFCO storage tanks are designed for rapid field assembly.



STEEL FRAMING PRODUCTS

SCAFCO Steel Division is a market leader in the design and production of high quality steel framing products.

We supply studs, track joist, and furring materials in a variety of standard or custom shapes and sizes. SCAFCO also produces a variety of proprietary products including Preformed Headers, Perfect Curve products, Supreme Framing System, and a large assortment clips and connectors.

All SCAFCO products are made from prime, domestic steel and meet the standards for American Society for Testing and Materials (ASTM) and International Code Council (ICC) Certification.



...ALL BUILT WITH QUALITY MATERIALS

SCAFCO designs products you can depend on for quick on-site assembly, simplicity of operations, and durability. Manufacturing takes place at company headquarters in Spokane, Washington (USA).

SCAFCO has 129,703 square feet (12,049 square meters) of plant and office space with the most modern engineering, technology, and equipment available.

SCAFCO SUPREME™ BIN/SILO SIZES

SPECIFICATIONS								
Model Number	Dia (Feet)	Dia. (Meters)	Eave Height (Feet)	Eave Height (Meters)	Overall Height (Feet)	Overall Height (Meters)	Capacity Bushels	Capacity Metric Tons Wheat
10232S	102	31.09	32' 1"	9.78	61' 3"	18.68	285,199	7,762
10236S	102	31.09	35' 8"	10.87	64' 10"	19.76	309,925	8,435
10239S	102	31.09	39' 3"	11.95	68' 4"	20.84	334,652	9,108
10240S	102	31.09	40' 1"	12.22	69' 3"	21.11	340,834	9,276
10243S	102	31.09	42' 9"	13.04	71' 11"	21.92	359,378	9,781
10244S	102	31.09	43' 8"	13.31	72' 10"	22.20	365,560	9,949
10246S	102	31.09	46' 4"	14.12	75' 6"	23.01	384,105	10,454
10248S	102	31.09	48' 1"	14.66	77' 3"	23.54	396,468	10,790
10250S	102	31.09	49' 11"	15.20	79' 1"	24.09	408,831	11,127
10252S	102	31.09	51' 8"	15.75	80' 10"	24.64	421,194	11,463
10254S	102	31.09	53' 5"	16.29	82' 7"	25.17	433,558	11,800
10257S	102	31.09	57' 0"	17.37	86' 2"	26.26	458,284	12,472
10261S	102	31.09	60' 7"	18.45	89' 9"	27.35	483,010	13,145
10264S	102	31.09	64' 1"	19.54	93' 3"	28.42	507,737	13,818
10268S	102	31.09	67' 8"	20.62	96' 10"	29.51	532,463	14,491
10271S	102	31.09	71' 3"	21.71	100' 5"	30.61	557,190	15,164
10275S	102	31.09	74' 9"	22.79	103' 11"	31.67	581,916	15,837
10278S	102	31.09	78' 4"	23.87	107' 6"	32.76	606,643	16,510
10281S	102	31.09	81' 11"	24.96	111' 1"	33.84	631,369	17,183
10285S	102	31.09	85' 5"	26.04	114' 7"	34.92	656,095	17,856
10532S	105	32.00	32' 1"	9.78	62' 1"	18.94	304,171	8,278
10536S	105	32.00	35' 8"	10.87	65' 8"	20.02	330,373	8,991
10539S	105	32.00	39' 3"	11.95	69' 3"	21.10	356,576	9,704
10540S	105	32.00	40' 1"	12.22	70' 1"	21.37	363,126	9,883
10543S	105	32.00	42' 9"	13.04	72' 10"	22.19	382,778	10,418
10544S	105	32.00	43' 8"	13.31	73' 8"	22.46	389,329	10,596
10546S	105	32.00	46' 4"	14.12	76' 4"	23.27	408,980	11,131
10548S	105	32.00	48' 1"	14.66	78' 1"	23.81	422,081	11,487
10550S	105	32.00	49' 11"	15.20	79' 11"	24.35	435,183	11,844
10552S	105	32.00	51' 8"	15.75	81' 8"	24.90	448,284	12,200
10554S	105	32.00	53' 5"	16.29	83' 6"	25.44	461,385	12,557
10557S	105	32.00	57' 0"	17.37	87' 0"	26.52	487,587	13,270
10561S	105	32.00	60' 7"	18.45	90' 7"	27.60	513,790	13,983
10564S	105	32.00	64' 1"	19.54	94' 1"	28.69	539,992	14,696
10568S	105	32.00	67' 8"	20.62	97' 8"	29.77	566,194	15,409
10571S	105	32.00	71' 3"	21.71	101' 3"	30.86	592,396	16,122
10575S	105	32.00	74' 9"	22.79	104' 9"	31.94	618,599	16,836
10578S	105	32.00	78' 4"	23.87	108' 4"	33.02	644,801	17,549
10581S	105	32.00	81' 11"	24.96	111' 11"	34.11	671,003	18,262
10585S	105	32.00	85' 5"	26.04	115' 6"	35.19	697,206	18,975
10832S	108	32.92	32' 1"	9.78	63' 0"	19.19	323,862	8,814
10836S	108	32.92	35' 8"	10.87	66' 7"	20.28	351,583	9,569
10839S	108	32.92	39' 3"	11.95	70' 1"	21.37	379,304	10,323
10840S	108	32.92	40' 1"	12.22	71' 0"	21.63	386,235	10,512
10843S	108	32.92	42' 9"	13.04	73' 8"	22.45	407,025	11,077

SPECIFICATIONS								
Model Number	Dia (Feet)	Dia. (Meters)	Eave Height (Feet)	Eave Height (Meters)	Overall Height (Feet)	Overall Height (Meters)	Capacity Bushels	Capacity Metric Tons Wheat
10844S	108	32.92	43' 8"	13.31	74' 7"	22.72	413,956	11,266
10846S	108	32.92	46' 4"	14.12	77' 3"	23.53	434,746	11,832
10848S	108	32.92	48' 1"	14.66	79' 0"	24.07	448,607	12,209
10850S	108	32.92	49' 11"	15.20	80' 9"	24.62	462,467	12,586
10852S	108	32.92	51' 8"	15.75	82' 7"	25.16	476,328	12,964
10854S	108	32.92	53' 5"	16.29	84' 4"	25.70	490,188	13,341
10857S	108	32.92	57' 0"	17.37	87' 11"	26.78	517,909	14,095
10861S	108	32.92	60' 7"	18.45	91' 6"	27.88	545,630	14,850
10864S	108	32.92	64' 1"	19.54	95' 0"	28.94	573,351	15,604
10868S	108	32.92	67' 8"	20.62	98' 7"	30.04	601,072	16,359
10871S	108	32.92	71' 3"	21.71	102' 2"	31.13	628,793	17,113
10875S	108	32.92	74' 9"	22.79	105' 8"	32.19	656,514	17,867
10878S	108	32.92	78' 4"	23.87	109' 3"	33.29	684,235	18,622
10881S	108	32.92	81' 11"	24.96	112' 10"	34.38	711,956	19,376
10885S	108	32.92	85' 5"	26.04	116' 4"	35.45	739,677	20,131
11132S	111	33.83	32' 1"	9.78	63' 10"	19.46	344,283	9,370
11136S	111	33.83	35' 8"	10.87	67' 5"	20.55	373,565	10,167
11139S	111	33.83	39' 3"	11.95	71' 0"	21.63	402,847	10,964
11140S	111	33.83	40' 1"	12.22	71' 10"	21.89	410,168	11,163
11143S	111	33.83	42' 9"	13.04	74' 6"	22.71	432,130	11,761
11144S	111	33.83	43' 8"	13.31	75' 5"	22.99	439,450	11,960
11146S	111	33.83	46' 4"	14.12	78' 1"	23.80	461,412	12,558
11148S	111	33.83	48' 1"	14.66	79' 10"	24.33	476,053	12,956
11150S	111	33.83	49' 11"	15.20	81' 7"	24.88	490,695	13,355
11152S	111	33.83	51' 8"	15.75	83' 5"	25.43	505,336	13,753
11154S	111	33.83	53' 5"	16.29	85' 2"	25.96	519,977	14,151
11157S	111	33.83	57' 0"	17.37	88' 9"	27.05	549,259	14,948
11161S	111	33.83	60' 7"	18.45	92' 4"	28.14	578,542	15,745
11164S	111	33.83	64' 1"	19.54	95' 10"	29.21	607,824	16,542
11168S	111	33.83	67' 8"	20.62	99' 5"	30.30	637,107	17,339
11171S	111	33.83	71' 3"	21.71	103' 0"	31.39	666,389	18,136
11175S	111	33.83	74' 9"	22.79	106' 6"	32.46	695,672	18,933
11178S	111	33.83	78' 4"	23.87	110' 1"	33.55	724,954	19,730
11181S	111	33.83	81' 11"	24.96	113' 8"	34.65	754,236	20,527
11185S	111	33.83	85' 5"	26.04	117' 2"	35.71	783,519	21,324
11432S	114	34.75	32' 1"	9.78	64' 8"	19.72	365,411	9,946
11436S	114	34.75	35' 8"	10.87	68' 3"	20.81	396,328	10,786
11439S	114	34.75	39' 3"	11.95	71' 10"	21.89	427,214	11,627
11440S	114	34.75	40' 1"	12.22	72' 8"	22.16	434,936	11,837
11443S	114	34.75	42' 9"	13.04	75' 4"	22.97	458,101	12,467
11444S	114	34.75	43' 8"	13.31	76' 3"	23.25	465,823	12,678
11446S	114	34.75	46' 4"	14.12	78' 11"	24.06	488,988	13,308
11448S	114	34.75	48' 1"	14.66	80' 8"	24.59	504,431	13,728
11450S	114	34.75	49' 11"	15.20	82' 6"	25.14	519,874	14,149
11452S	114	34.75	51' 8"	15.75	84' 3"	25.69	535,318	14,569



SCAFCO Supreme™ Bins/Silos offer the largest capacities of all the SCAFCO bins/silos. This series ranges from 120' (36.58 m) to 138' (42.06 m) diameters with capacities in excess of 1.2 million bushels (39,300 m³). SCAFCO Supreme™ Bins/Silos stand apart from the competition with the largest clear span roof. Clear span means that there is no internal roof supports to impede cleanout of the silo. The SCAFCO Supreme™ Bins/Silos offer the largest standard peak load in the industry at 50,000 lbs (22,680 kg). SCAFCO roof structure features all cold formed, G-115 galvanized support structure ensuring long life and service without the fear of losing your investment to corrosion. SCAFCO Supreme™ bins/silos also feature corrugated roof panels adding strength and rigidity to the roof.

All SCAFCO accessories are available on the Supreme™ line of bins/silos. These include optional roof stairways, interior and exterior ladders, side discharge kits, and giant doors for machinery access. SCAFCO has also designed a custom "Quad F" aeration system providing the aeration required for the extreme capacities stored in the Supreme™ line of Bins/Silos.



5400 East Broadway Avenue
P.O. Box 11215
Spokane, Washington 99211-1215, USA

Toll Free: +1.800.224.0676
Telephone: +1.509.535.1571
Fax: +1.509.535.9130
Email: mail@SCAFCO.com
Web: www.SCAFCO.com

